

# SeqPure PCR Purification System

Fast, Pure, Simple & Economical

## Purified PCR Products That Are Ready-to-Use for Sequencing

Biochain's SeqPure PCR Purification System is designed for rapid and efficient purification of PCR products. The system utilizes paramagnetic bead technology to selectively bind DNA fragments 100 bp and larger in size. Simple washing steps will remove salts, primers, primer-dimers, nucleotides, and enzymes prior to elution of the purified PCR product. The SeqPure DNA Purification System is ideal for purification of DNA using either manual procedures or automated liquid handling instruments.

### Applications:

- PCR
- Genotyping
- Sequencing, NGS
- Cloning
- Microarrays
- Fragment analysis
- Restriction enzyme digestion



1. SeqPure beads are added to the PCR product for DNA binding.



2. During the process, contaminants and salts are washed off.



3. Purified DNA is eluted, ready to be used in subsequent applications.

## Key Features

- Similar performance as leading competitors, at a budget-friendly price
- Purifies PCR products in under half an hour
- Removes salts, dNTPs, primers, and enzymes
- No centrifugation or vacuum filtration required
- No fancy buffers; just use ethanol and Tris-HCl /TE

## Excellent Binding Capability by SeqPure

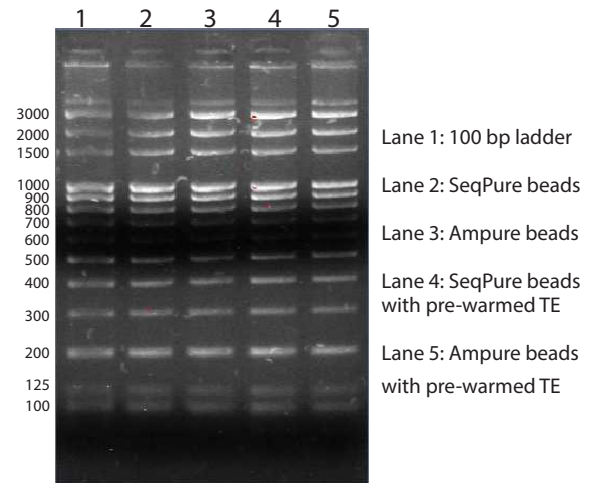


Figure 1. Equal amounts of 100 bp ladder containing salts and proteins were purified with SeqPure beads and Ampure beads. Different buffers, TE and pre-warmed TE (for increasing the yield) were used for elution. Eluted DNA (8 µl each) were loaded and run on a 1% agarose gel. The gel shows excellent recovery of all fragments from 3000-100bp.

## Excellent purification and DNA recovery with the SeqPure magnetic bead system

Table 1. Comparison of SeqPure and AmPure in purifying 100 bp DNA ladder containing salts and protein. The purity was measured by spectrophotometry. Both the 260/280 and 260/230 absorbance ratios show that SeqPure is efficient at removing salts and proteins and is comparable to AmPure.

### Ratios Before Purification

	A <sub>260/280</sub>	A <sub>260/230</sub>
<b>100 bp ladder (w/ salts and proteins)</b>	<b>1.4</b>	<b>0.76</b>

### Ratios After Purification

	A <sub>260/280</sub>	A <sub>260/230</sub>
<b>SeqPure beads</b>	<b>1.91</b>	<b>2.61</b>
<b>SeqPure beads with pre-warmed TE</b>	<b>1.86</b>	<b>2.53</b>
<b>AmPure beads</b>	<b>1.84</b>	<b>2.8</b>
<b>AmPure beads with pre-warmed TE</b>	<b>1.84</b>	<b>2.65</b>

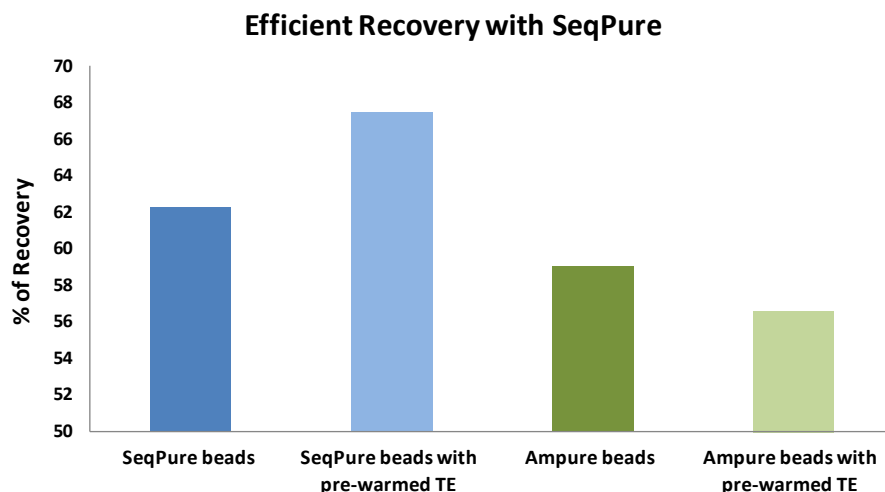


Figure 2. Equal amounts of 100 bp ladder containing salts and proteins were purified with SeqPure beads and Ampure beads. Different buffer conditions, TE and pre-warmed TE (for increasing the yield) were used for elution. The SeqPure process showed better recovery of DNAs in both experimental conditions.

Catalog No.	Product	Unit
Z1510001	SeqPure PCR Purification System	5 ml
Z1510002	SeqPure PCR Purification System	50 ml
Z1510003	SeqPure PCR Purification System	500 ml

Please inquire about our other kits and applications.