

# FDA Standard Tissue Array

Best tool for therapeutic and *in vivo* diagnostic antibody validation

## 30 Different Normal Tissue Types - Ideal for Screening

BioChain's frozen and FFPE FDA tissue arrays consist of cores from a wide variety of human or rodent tissues placed on one or two slides, allowing for rapid antibody screening while reducing usage of precious reagents. The tissue cores are chosen based on guidelines provided by the FDA for diagnostic and therapeutic purposes, in order to speed up your research and initial antibody validation projects.

### Advantages and Features

- **30 human normal frozen or FFPE tissues** arrayed according to FDA guidelines
- **3 donors** per specific tissue type following FDA regulations
- **Time-efficient and cost-effective** since many tissues can be screened at once
- **Convenience** of multiple-donor tissue arrangements for polymorphism screening
- **Large tissue cores** for comprehensive analysis
- **Clinical information available** for donors
- QC includes both H&E staining and IHC
- Similar arrays for mouse and rat

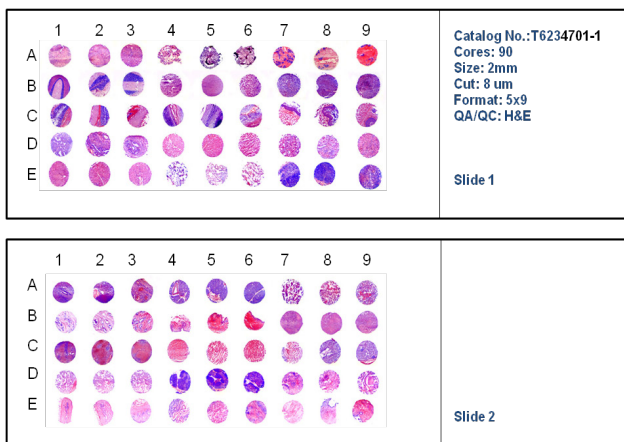


Figure 1. FDA Standard Frozen Tissue Arrays stained with H&E. 90 tissues spotted on 2 glass slides.  
Slide 1: A7, A8, A9 are breast tissues from 3 donors.  
Slide 2: D4, D5, D6 are thymus tissues from 3

### Applications:

- Quick evaluation of specific binding and cross-reactivity
- Rapid screening of multiple tissues to identify tissue-specific markers
- Validation of antibodies used for manufacturing *in vivo* and *in vitro* products
- Frozen arrays are ideal for screening therapeutic antibodies
- FFPE arrays are ideal for screening diagnostic antibodies

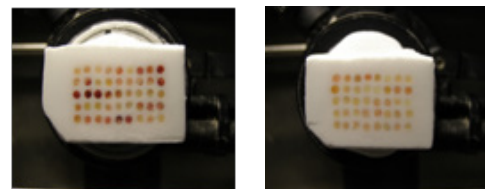


Figure 2. BioChain's Frozen Tissue Array blocks in OCT compound.

Each Array may contain one of the following:

- Up to 30 multiple tissue types from adult human, dog, or rabbit
- 14 different human tumor and corresponding normal tissues
- Up to 37 tissue specific tumors from human
- Tissues from 15 species consisting of either brain or liver

## Customized Arrays Available Upon Request

- Choose from normal, tumor, and diseased tissues
- Choose from gender, age, and ethnicity
- Custom core sizes
- Smaller array available from customer's blocks
- Full service available: sectioning, H&E staining, core selection, and constructing arrays
- Please inquire with your specific needs

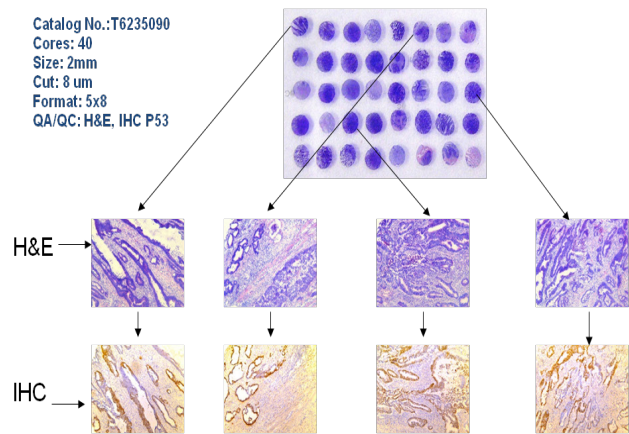


Figure 3. Tissue array containing 37 different human colon tumors and 3 normal controls stained with H&E. IHC was then performed to demonstrate the integrity and localization of relevant biomarkers.

Catalog No.	Product
T6234701	FDA Standard Frozen Tissue Array - Human Adult Normal
T6334701	FDA Standard Frozen Tissue Array - Mouse
T6434701	FDA Standard Frozen Tissue Array - Rat
T8234701	FDA Standard Tissue Array

## Additional Collection of Tissue Arrays

Catalog No.	Product
T6234700	Frozen Tissue Array - Human Adult Normal Tissue, Multi-tissue I
T6235700	Frozen Tissue Array - Human Tumor and Normal Tissue, Multi-tissue I
T6235201	Frozen Tissue Array - Human prostate tumor from multiple donors
T6235086	Frozen Tissue Array - Human breast tumor from multiple donors
T6235090	Frozen Tissue Array - Human colon tumor from multiple donors
T6235142	Frozen Tissue Array - Human kidney tumor from multiple donors
T6235152	Frozen Tissue Array - Human lung tumor from multiple donors
T6235183	Frozen Tissue Array - Human ovarian tumor from multiple donors
T6134XXX	Multiple Species Frozen Tissue Array - Brain or Liver

Please inquire about our other tissues and custom services