

# Data Sheet

**Product Name: cDNA Matched Pairs (PP)**

**Catalog No.: C8235142-PP**

**Lot No.: A603468**

**Species:**  Human  Mouse  Rat  Monkey (Rh)  Guinea Pig  Porcine  
 Bovine  Hamster  Dog  Monkey (Cy)  Rabbit  Plant

**Tissue Type:**  Normal  Adult  Fetal  Tumor  Disease  Cell line

**Tissue Name: Kidney**

**Donor Information:**

Tissue	Part No.	Pathological Diagnosis	Age/Sex
Primary Tumor	C8235142-PT	Clear cell carcinoma	60/F
Adjacent Normal	C8235142-PN	Normal	

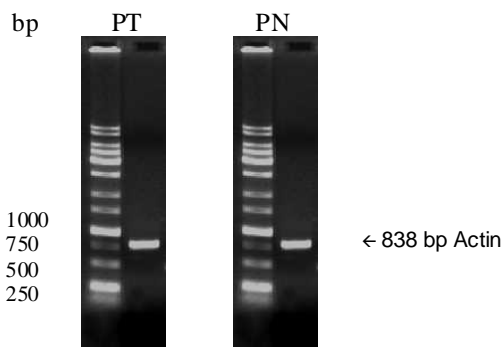
## Components

- 2x10 rxn cDNA per package

Tissue	Part No.	Qty.(rxn)
Primary Tumor	C8235142-PT	10
Adjacent Normal	C8235142-PN	10

- Certificate of Analysis
- Actin control primer

## Product Image:



The synthesized cDNA was used as template for PCR amplification of  $\beta$ -actin gene. A 838 bp  $\beta$ -actin band was visualized on 2% agarose gel.

**FOR IN VITRO RESEARCH USE ONLY**

**APPROVED BY:** 