

Data Sheet

Product Name: cDNA Matched Pairs (PP)

Catalog No.: C8235090-PP

Lot No.: B111061

Species: Human Mouse Rat Monkey (Rh) Guinea Pig Porcine
 Bovine Hamster Dog Monkey (Cy) Rabbit Plant

Tissue Type: Normal Adult Fetal Tumor Disease Cell line

Tissue Name: Colon

Donor Information:

Tissue	Part No.	Pathological Diagnosis	Age/Sex
Primary Tumor	C8235090-PT	Adenocarcinoma, Moderately Differentiated	60/M
Adjacent Normal	C8235090-PN	Normal	

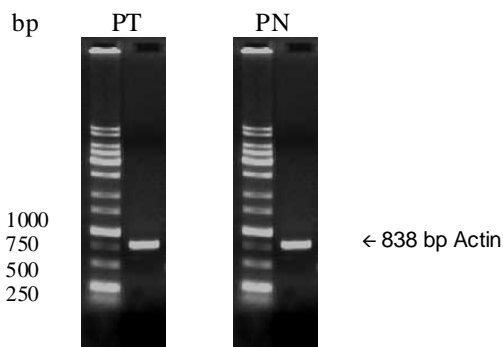
Components

- 2x10 rxn cDNA per package

Tissue	Part No.	Qty.(rxn)
Primary Tumor	C8235090-PT	10
Adjacent Normal	C8235090-PN	10

- Certificate of Analysis
- Actin control primer

Product Image:



The synthesized cDNA was used as template for PCR amplification of β -actin gene. A 838 bp β -actin band was visualized on 2% agarose gel.

FOR IN VITRO RESEARCH USE ONLY

APPROVED BY: 