

xTractPure™ Biofluid DNA Extraction Kit

Fast and Efficient Magnetic Beads-Based Protocol

Liquid Biopsy Product Series: xTractPure Biofluid DNA Extraction Kit

BioChain's xTractPure Biofluid DNA Extraction kit allows for fast and efficient genomic DNA extraction from biofluid samples as well as swabs. The magnetic bead-based extraction protocol is also ideally suited for automation using open systems. DNA extracted using this kit is suitable for next generation sequencing (NGS), PCR, qPCR, and other applications.

Advantages & Features

- High DNA recovery and quality
- Short and scalable protocol
- Cost effective extractions
- Non-toxic chemicals
- Automatable on open systems such as KingFisher Flex extraction system

Competitive Yield Comparison

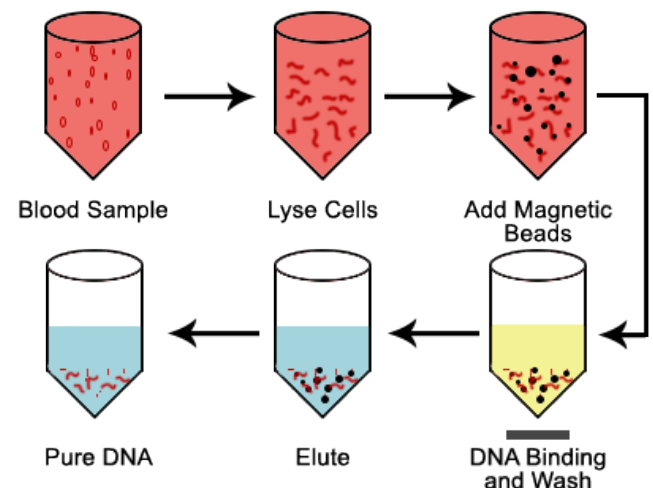
	Conc. (ng/)	A260/280	A260/230
Competitor T 1	92.07	1.87	1.92
Competitor T 2	97.24	1.90	2.16
Competitor T 3	96.22	1.91	2.22
xTractPure 1	102.71	1.93	2.26
xTractPure 2	108.47	1.94	2.23
xTractPure 3	109.35	1.94	2.24

Table 1: 200 µl of whole blood from a single donor were extracted in triplicate using either Competitor T's kit or BioChain's xTractPure Biofluid Extraction kit. The yield and purity were then analyzed. The results show that the xTractPure kit is robust against the competition and the gDNA extracted consists of optimal purity.

Applications:

- Next Generation Sequencing (NGS)
- PCR and qPCR gene amplification
- Genomic DNA library construction
- DNA methylation studies
- Copy number variation (CNV) studies

Sample Work Flow



Quality Comparison Against Competition

	CT1	CT2	CT3
Competitor T 1	22.80	22.58	22.70
Competitor T 2	22.66	22.75	22.67
Competitor T 3	22.90	22.70	22.58
xTractPure 1	22.74	22.64	22.40
xTractPure 2	22.75	22.50	22.66
xTractPure 3	22.75	22.90	22.67

Table 2: qPCR was performed in triplicate using gDNA extracted from either Competitor T's kit or xTractPure. The results demonstrate the quality of the gDNA obtained using xTractPure is as pure as the competition while the yields remain superior (Table 1).

Scalability of xTractPure

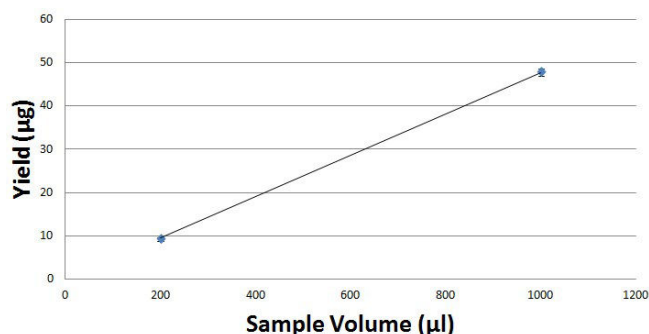


Fig. 1: gDNA was extracted from either 200 µl or 1 mL of input blood using xTractPure. The resulting yields show that the kit is highly scalable

Ordering Information

Catalog No.	Product	Unit
Z2212001	xTractPure™ Biofluid DNA Extraction Kit	96 preps
Related Products		
K5011610	cfPure® Cell Free DNA Extraction Kit	100 (1 mL) preps 10 (10 mL) preps
K5011625	cfPure® Cell Free DNA Extraction Kit	250 (1 mL) preps 25 (10 mL) preps
K5011625MA	cfPure® MAX Cell Free DNA Extraction Kit	50 (5 mL) preps 25 (10 mL) preps

xTractPure Kits Selection Guide

Assay type	Product	FFPE	Cell line	Tissue	Blood	Buffy coat	Swab	Saliva
DNA	xTractPure Biofluids				*	*	*	*
	xTractPure Cell & Tissue DNA		*	*				
	xTractPure FFPE DNA	*						
RNA	xTractPure Blood Total RNA				*			
	xTractPure Cell Line RNA		*					
	xTractPure FFPE RNA	*						
DNA & RNA	xTractPure FFPE DR (DNA & RNA)	*						

Please contact us and learn more about other kits, applications and automation protocols.