

Data Sheet

Product Name: Total RNA

Catalog No.: R1254148-1

Lot No.: C703012

Species: Human Mouse Rat Monkey (Rh) Guinea Pig Porcine
 Cell Line Hamster Dog Monkey (Cy) Rabbit Plant

Tissue Type: Normal Adult Fetal Tumor Disease

Cell Line Name: Lymphocyte cell

Source: Human Lymphocyte cell Line

DNase I Treatment: Yes No

Components:

1. 100 μ g total RNA per package; Concentration 2.60 μ g/ μ l.
2. Certificate of Analysis

Product Image:

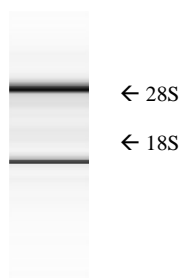


Fig. 1 Total RNA was analyzed by Agilent bio-chip

FOR IN VITRO RESEARCH USE ONLY

APPROVED BY: 