

DNA Isolation Kits

Get DNA Out of Any Sample - A Comprehensive Solution

DNA Isolation Kit Product Series:

BioChain's Blood and Serum DNA Isolation Kit is an advanced kit with no phenol-chloroform extraction, no protease, and no precipitation steps. The total time required for a sample of size of 10 to 200 μ l extraction is less than 25 minutes. The expected DNA yield for this isolation is 3-9 μ g/200 μ l of whole blood.

BioChain's Genomic DNA Extraction Kit is a versatile kit suitable for both tissues and cells. It produces a high yield with no protease.

BioChain's FFPE Tissue Extraction Kit produces a high DNA yield and purity. This safe method avoids xylene and other toxic solvents. In particular, there are 4 different extraction kits (solution based, column based, bead based, and automated).

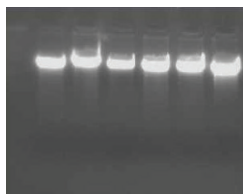


Figure 1. Replicates of DNA isolated from whole blood.

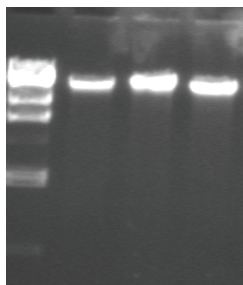


Figure 2. Results of genomic DNA extraction kit on agarose gel.

Lane 1: 1 μ g bovine liver genomic DNA.
Lane 2: 1 μ g beagle dog liver genomic DNA.
Lane 3: 1 μ g guinea pig liver genomic DNA.

Key Features

- Tissue and cell genomic DNA extraction
- Blood and serum genomic DNA extraction
- FFPE tissue genomic DNA extraction
- Stool genomic DNA extraction
- Saliva genomic DNA extraction
- Urine genomic DNA extraction

Applications:

- DNA Isolation

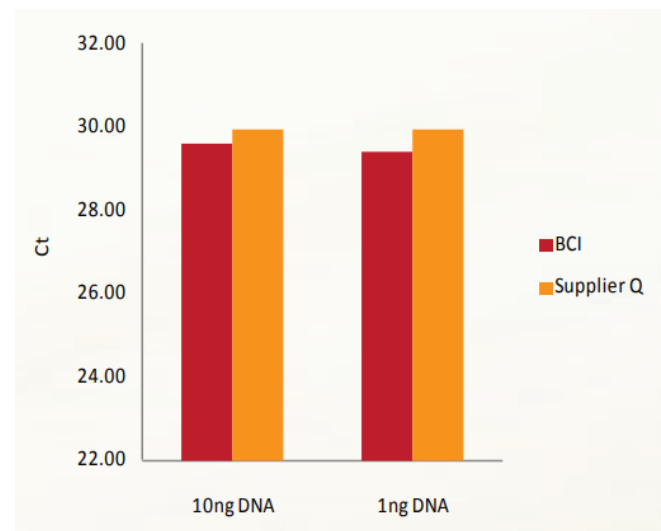


Figure 3. DNA extracts from human pancreas FFPE sections analyzed with qPCR using β -actin as target. DNA were extracted using BioChain's FFPE DNA extraction kits (column based) and supplier Q's kit.