

Data Sheet

Product Name: Tumor Total RNA Matched Pairs (PP)

Catalog No.: R8235206-PP-10

Lot No.: A703364

Species: Human Mouse Rat Monkey (Rh) Guinea Pig Porcine
 Bovine Hamster Dog Monkey (Cy) Rabbit Plant

Tissue Type: Normal Adult Fetal Tumor Disease

Tissue Name: Rectum

DNase I Treatment: Yes No

Donor Information:

| Tissue | Part No. | Pathological Diagnosis | Age/Sex |
|-----------------|-------------|--|---------|
| Primary Tumor | R8235206-PT | Adenocarcinoma, Moderately Differentiated. | 70/M |
| Adjacent Normal | R8235206-PN | Normal | |

Components

1. 2x10 µg total RNA per package

| Tissue | Part No. | Qty. (µg) | Concentration (µg/µl) |
|-----------------|-------------|-----------|-----------------------|
| Primary Tumor | R8235206-PT | 10 | 2.42 |
| Adjacent Normal | R8235206-PN | 10 | 2.34 |

2. Certificate of Analysis

Product Image:

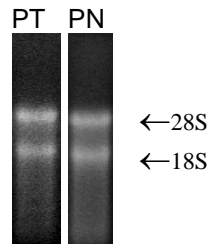


Fig. 1 Total RNA was analyzed by electrophoresis on 1% agarose gel

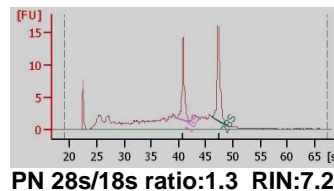
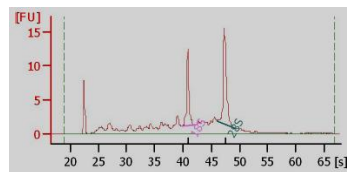


Fig. 2 Total RNA was analyzed by Agilent bio-chip

FOR IN VITRO RESEARCH USE ONLY

APPROVED BY: 