

Data Sheet

Product Name: Total RNA

Catalog No.: R1255840-50

Lot No.: A802170

Species: Human Mouse Rat Monkey (Rh) Guinea Pig Porcine
 Cell Line Hamster Dog Monkey (Cy) Rabbit Plant

Tissue Type: Normal Adult Fetal Tumor Disease

Cell Line Name: Raji

Source: Human Lymphoma; B Lymphoma

DNase I Treatment: Yes No

Components:

1. 50 µg total RNA per package; Concentration 2.27 µg/µl.
2. Certificate of Analysis

Product Image:

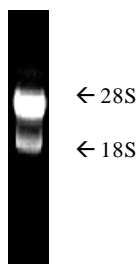
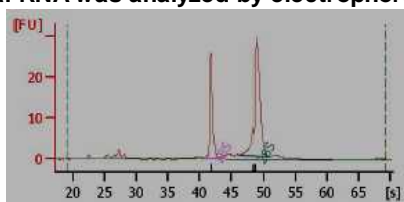


Fig. 1 Total RNA was analyzed by electrophoresis on 1% agarose gel



rRNA Ratio [28s/18s] 1.9 ; RIN: 10

Fig. 2 Total RNA was analyzed by Agilent bio-chip

FOR IN VITRO RESEARCH USE ONLY

APPROVED BY: 