

# Data Sheet

**Product Name:** Total RNA

**Catalog No.:** R1254148-1

**Lot No.:** C605029

**Species:**  Human  Mouse  Rat  Monkey (Rh)  Guinea Pig  Porcine  
 Cell Line  Hamster  Dog  Monkey (Cy)  Rabbit  Plant

**Tissue Type:**  Normal  Adult  Fetal  Tumor  Disease

**Cell Line Name:** Lymphocyte cell

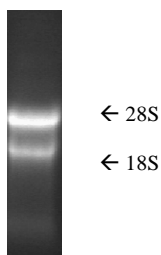
**Source:** Human Lymphocyte cell Line

**DNase I Treatment:**  Yes  No

**Components:**

1. 100 µg total RNA per package; Concentration 2.60 µg/µl.
2. Certificate of Analysis

**Product Image:**



**Fig. 1** Total RNA was analyzed by electrophoresis on 1% agarose gel

**FOR IN VITRO RESEARCH USE ONLY**

**APPROVED BY:** 