

Certificate of Analysis

Product Name: Total Protein Lysate - Liver Cirrhosis: Prostate
Catalog No.: P1236201Lcs
Lot No.: B703007
Species: Human Mouse Rat Monkey (Rh) Guinea Pig Porcine
 Bovine Hamster Dog Monkey (Cy) Rabbit Plant

Tissue Type: Normal Adult Fetal Tumor Disease Cell Line

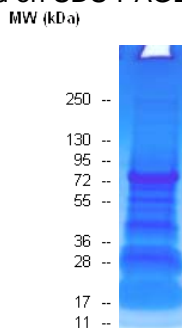
Donor Information:

 Male: 70 year (s) old Pool of 1 donor(s)

Female: _____ year (s) old Pool of _____ donor(s)

Clinical Diagnosis: Liver Cirrhosis

Packaging: 1 mg per vial; **Concentration:** 5 mg/ml.

Quality Control: Protein lysate is verified on SDS-PAGE comparing to standard protein lysate.


Protein lysate can be validated by Western Blot using specific biomarker: GAPDH for total protein, cytoplasmic and universal total protein; Histone for nuclear protein; Na/K ATPase for membrane protein; Vimentin for cytoskeleton protein.

Uses: Western Blot (10 µg to 20 µg per lane is recommended for a mini gel), Immunoprecipitation, Electrophoresis, Enzymatic activity analysis, protein-protein interaction, gel shift assay, tissue specific expression, and mass spec. analysis.

Buffer:

| <u>Location</u> | <u>Buffer Components*</u> |
|----------------------|---|
| Total protein | HEPES (pH7.9), KCl, Sucrose, Sodium deoxycholate, and NP-40 |
| Membrane protein | The same as above. |
| Nuclear protein | HEPES (pH7.9), NaCl |
| Cytoplasmic protein | HEPES (pH7.9), KCl, and Sucrose. |
| Cytoskeleton protein | PIPES (pH 6.8), NaCl, SDS, and Sucrose |

 Note: *Each buffer contains, MagCl₂, EDTA, Glycerol, and a cocktail of protease inhibitors

Storage: Store at 2-8°C for continuous use within a day. For extended storage, freeze working aliquots at -70°C. Repeated freezing and thawing is not recommended. Under proper storage conditions the shelf life is six months from the date of receipt.

Shipping: Dry Ice

User's Note: Products are intended for laboratory research purposes only and should be used by qualified personnel only.

 APPROVED BY: 