

## Certificate of Analysis

**Product Name: Total Protein Lysate -Human Adult Normal Tissue: Trachea**
**Catalog No.: P1234160**
**Lot No.: B204077**
**Species:**  Human  Mouse  Rat  Monkey (Rh)  Guinea Pig  Porcine  
 Bovine  Hamster  Dog  Monkey (Cy)  Rabbit  Plant

**Tissue Type:**  Normal  Adult  Fetal  Tumor  Disease  Cell Line

**Donor Information:**

Male: \_\_\_\_\_ year(s) old

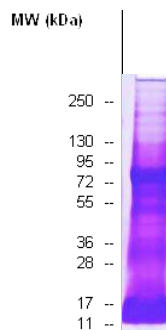
Pool of \_\_\_\_\_ donor(s)

 Female: 82 year(s) old

 Pool of 1 donor(s)

**Clinical Diagnosis:** Normal

**Packaging:** 1 mg per vial; **Concentration:** 4.54 mg/ml.

**Quality Control:** Protein lysate is verified on SDS-PAGE comparing to standard protein lysate.


Protein lysate can be validated by Western Blot using specific biomarker: GAPDH for total protein, cytoplasmic and universal total protein; Histone for nuclear protein; Na/K ATPase for membrane protein; Vimentin for cytoskeleton protein.

**Use:** Western Blot (10 µg to 20 µg per lane is recommended for a mini gel),

Immunoprecipitation, Electrophoresis, Enzymatic activity analysis, protein-protein interaction, gel shift assay, tissue specific expression, and mass spec. analysis.

**Buffer:**

| <u>Location</u>      | <u>Buffer Components*</u>                                   |
|----------------------|---|
| Total protein        | HEPES (pH7.9), KCl, Sucrose, Sodium deoxycholate, and NP-40 |
| Membrane protein     | The same as above.  |
| Nuclear protein      | HEPES (pH7.9), NaCl   |
| Cytoplasmic protein  | HEPES (pH7.9), KCl, and Sucrose.                            |
| Cytoskeleton protein | PIPES (pH 6.8), NaCl, SDS, and Sucrose                      |

 Note: \*Each buffer contains, MagCl<sub>2</sub>, EDTA, Glycerol, and a cocktail of protease inhibitors

**Storage:** Store at 2-8°C for continuous use within a day. For extended storage, freeze working aliquots at -70°C. Repeated freezing and thawing is not recommended. Under proper storage conditions the shelf life is six months from the date of receipt.

**Shipping:** Dry Ice

**User's Note:** *Products are intended for laboratory research purposes only and should be used by qualified personnel only.*
**APPROVED BY:** \_\_\_\_\_

