

Certificate of Analysis

Product Name: Total Protein Lysate - Human Adult Normal Tissue: Heart: Pulmonic Valve

Catalog No.: P1234135

Lot No.: A703386

Species: Human Mouse Rat Monkey (Rh) Guinea Pig Porcine
 Bovine Hamster Dog Monkey (Cy) Rabbit Plant

Tissue Type: Normal Adult Fetal Tumor Disease Cell Line

Donor Information:

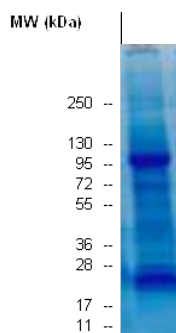
Male: 77 year(s) old Pool of 1 donor(s)

Female: _____ year(s) old Pool of _____ donor(s)

Clinical Diagnosis: Normal

Packaging: 1 mg per vial; **Concentration:** 5 mg/ml.

Quality Control: Protein lysate is verified on SDS-PAGE comparing to standard protein lysate.



Protein lysate can be validated by Western Blot using specific biomarker: GAPDH for total protein, cytoplasmic and universal total protein; Histone for nuclear protein; Na/K ATPase for membrane protein; Vimentin for cytoskeleton protein.

Use: Western Blot (10 µg to 20 µg per lane is recommended for a mini gel), Immunoprecipitation, Electrophoresis, Enzymatic activity analysis, protein-protein interaction, gel shift assay, tissue specific expression, and mass spec. analysis.

Buffer:

<u>Location</u>	<u>Buffer Components*</u>
Total protein	HEPES (pH7.9), KCl, Sucrose, Sodium deoxycholate, and NP-40
Membrane protein	The same as above.
Nuclear protein	HEPES (pH7.9), NaCl
Cytoplasmic protein	HEPES (pH7.9), KCl, and Sucrose.
Cytoskeleton protein	PIPES (pH 6.8), NaCl, SDS, and Sucrose

Note: *Each buffer contains, MgCl₂, EDTA, Glycerol, and a cocktail of protease inhibitors

Storage: Store at 2-8°C for continuous use within a day. For extended storage, freeze working aliquots at -70°C. Repeated freezing and thawing is not recommended. Under proper storage conditions the shelf life is six months from the date of receipt.

Shipping: Dry Ice

User's Note: Products are intended for laboratory research purposes only and should be used by qualified personnel only.

APPROVED BY: 